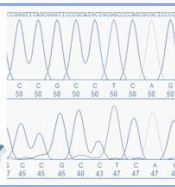
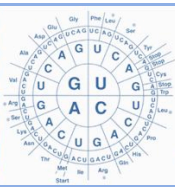
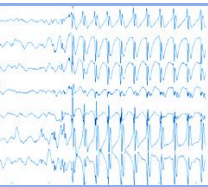


**UK  
SH**



# Young Researchers in Pediatric Epileptology: From Gene To Disease

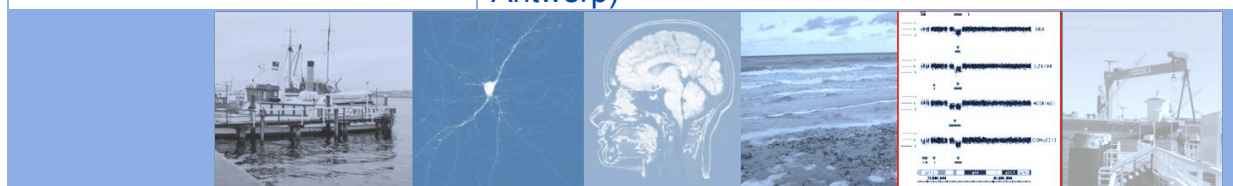
**August 23<sup>rd</sup> – August 25<sup>th</sup>, 2012**  
Christian-Albrechts-University &  
University Hospital Schleswig-Holstein,  
Kiel, Germany

## Thursday, 23.08.2012

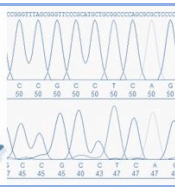
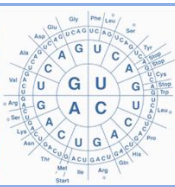
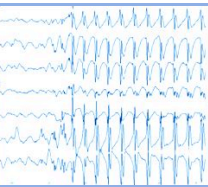
5:00 pm	<b>Registration</b>
5:10 – 5:30 pm	<b>Welcome to KIEL</b> (U. Stephani, Kiel)
5:30 – 7:00 pm	<b>Keynote Lecture:</b> Is pediatric epilepsy research beneficial for A: the understanding of epilepsies and B: epilepsy patients (O. Dulac, Paris)
7:00 pm	<b>Get Together</b> (Location: t.b.a., at the “Kieler Förde”)

## Friday, 24.08.2012

9:00 am – 1:00 pm	<b>Scientific Session I: The genetic basis of childhood epilepsies</b>
9:00 – 9:30 am	From monogenic families to copy number variation: Genetics of Idiopathic Generalized Epilepsies (K.- M. Klein, Marburg)
9:30 – 10:00 am	From twin studies to ion channels: Genetics of Idiopathic Focal Epilepsies (J. Lemke, Bern)
10:00 – 10:30 am	About new genes and novel phenotypes: Genetics of epileptic encephalopathies (S. Weckhuysen, Antwerp)



**UK  
SH**

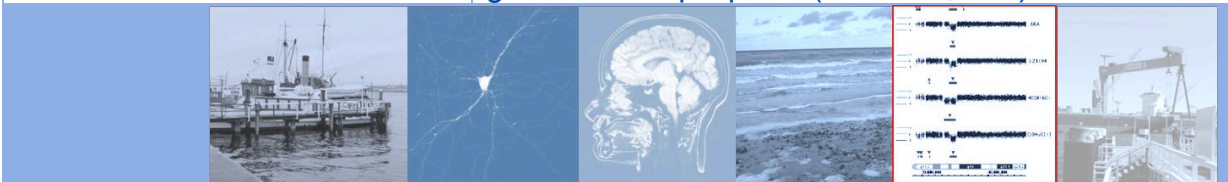


**Friday, 24.08.2012**

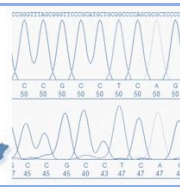
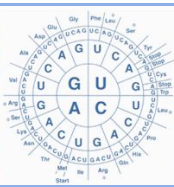
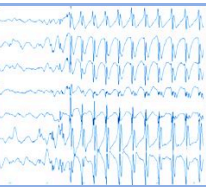
10:30 – 11:00 am	<b>Coffee break</b>
11:00 am – 1:00 pm	<b>Presentation and discussion of research projects in epilepsy genetics</b> (Participants)
1:00 – 2:00 pm	<b>Lunch break</b>
2:00 – 3:00 pm	<b>Keynote Lecture:</b> Risks, benefits and solidarity: ethical issues in paediatric epilepsy research (K. Hens, Maastricht)
3:00 – 7:00 pm	<b>Scientific Session II:</b> <b>Cells, currents and networks:</b> <b>Neurophysiological studies in childhood epilepsies</b>
3:00 – 3:30 pm	From sleep and spindles to spikes and seizures: Neurophysiological data on absence epilepsy (P. Coulon, Münster)
3:30 – 4:00 pm	Gene expression and channel properties: Explanations for age dependency in infantile epilepsies (S. Maljevic, Tübingen)
4:00 – 4:30 pm	The fragile balance of excitation and inhibition: Channels and ions and epileptogenesis (F. Benninger, Tel Aviv)
4:30 – 5:00 pm	<b>Coffee break</b>
5:00 – 7:00 pm	<b>Presentation and discussion of neurophysiological research projects</b> (Participants)
7:30 pm	<b>Dinner &amp; “Networking”</b> (Location: t.b.a., at the seaside)

**Saturday, 25.08.2012**

8:00 am	<b>Breakfast Talk:</b> Re-think – motivation, networks, concepts: the power of a new generation in pediatric epileptology (I. Helbig, Kiel)
8:30 – 12:30 am	<b>Scientific Session III:</b> <b>From cells to systems: Functional studies in childhood epilepsies</b>
8:30 – 9:00 am	Thalamus, cortex and Co: Networks in idiopathic generalized epilepsies (F. Möller, Kiel)



**UK  
SH**



**Saturday, 25.08.2012**

9:00 – 9:30 am	Hypsarrhythmia and ESES: Functional imaging in epileptic encephalopathies (M. Siniatchkin Frankfurt)
9:30 – 10:00 am	The source of epilepsy: High frequency oscillations as markers for epileptogenicity (J. Jacobs, Freiburg)
<b>10:00 – 10:30 am</b>	<b>Coffee break</b>
<b>10:30 – 12:30 am</b>	<b>Presentation and discussion of research projects using functional imaging methods (Participants)</b>
<b>12:30 am – 1:30 pm</b>	<b>Lunch break</b>
<b>1:30 – 4:00 pm</b>	<b>Scientific Session IV: From bedside to bench - and back: Clinical aspects of epilepsies in childhood and adolescence</b>
1:30 – 2:00 pm	What are we talking about? The clinical picture of age-related epilepsy syndromes (C. Doege, Schwentental/ Raisdorf)
2:00 – 2:30 pm	From neurophysiological investigations to clinical implications: GABA receptors in neonatal seizures (K. Kirmse, Jena)
2:30 – 3:00 pm	Finally at the bedside: Examples for clinical applications of up-to-date scientific findings (J. Albers & S. von Spiczak, Kiel)
<b>3:00 – 3:30 pm</b>	<b>Coffee break</b>
<b>3:30 – 4:30 pm</b>	<b>Presentation and discussion of research projects investigating clinical aspects of childhood epilepsies (Participants)</b>
<b>4:30 pm</b>	<b>Farewell from KIEL</b>

